

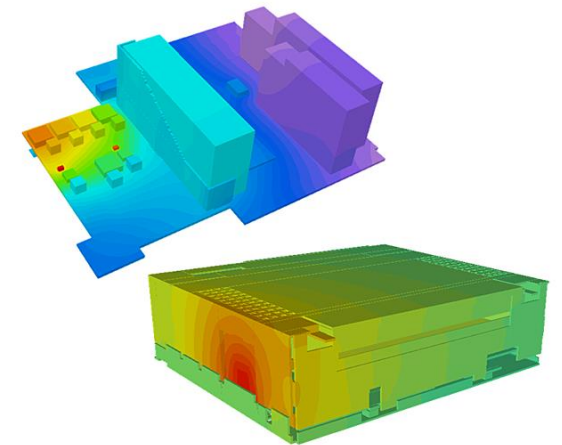
Continental Automotive, Germany

Getting the product right the first time



Using thermal simulation
for the design of
automotive infotainment
and connectivity

Simcenter Flotherm
simulation supports
knowledge generation
and deeper
understanding of
product behavior at
lower cost



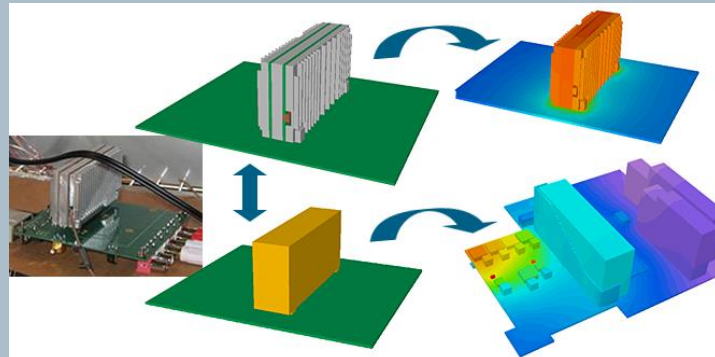
Continental Automotive, Germany

Getting the product right the first time

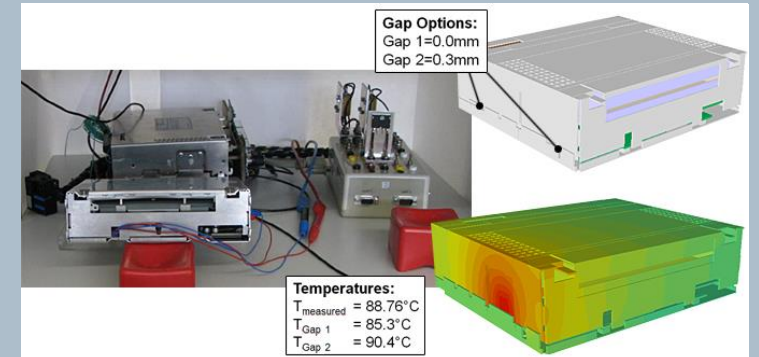


- Continental's simulation vision is to get the product right the first time
- Simcenter Flotherm simulation supports knowledge generation and aids understanding at a lower cost, in shorter time and with increased product flexibility

Optimizing design prior to prototyping



Single block (system level) and detailed (reference) representations of tuner module



Verification of case thermal contact modeling assumption

- Simcenter Flotherm simulation early in the design process helps achieve design flexibility and enables better design decisions before the freedom for such decisions is eliminated. Simulation is now highly integrated into the design process.

“Simcenter Flotherm is a key component of our simulation-based design decisions strategy, ensuring that our thermal design goals are met and we can deliver on Continental's simulation vision of getting the product right the first time.”

Dr. Uwe Lautenschlager, Continental Automotive GmbH